

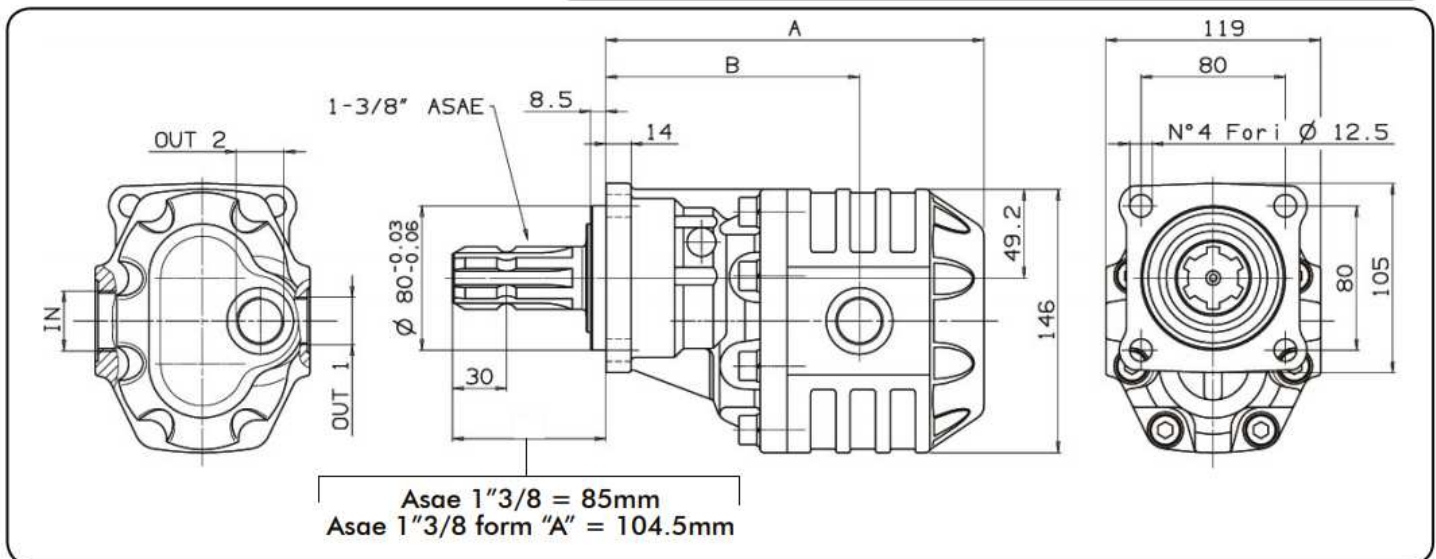
**CODICE FAMIGLIA** **105-061**  
 FAMILY CODE

**POMPE AD INGRANAGGI**  
**FISSAGGIO 4 FORI-ASAE**  
**4 HOLES-ASAE HYDRAULIC GEAR PUMPS**

**NPH ASAE**



Fluido idraulico Fluid	Minerale o sintetico compatibile con guarnizioni: Mineral or synthetic compatible with the following seals: NBR, FKM, FPM, Nylon				
Viscosità cinematica consigliata Kinematic viscosity suggested	T media ambiente (°C) Average ambient temp. (°C)	< -10	-10÷10	10÷35	> 35
	VG (cSt = mm <sup>2</sup> /s)	22	32	46	68
Viscosità cinematica ottimale di esercizio Optimale kinematic viscosity		VG= 10 cSt ÷ 100 cSt			
Viscosità cinematica max consentita all'avviamento Max kinematic viscosity suggested at the start-up		VG= 750 cSt			
Indice di viscosità consigliato Viscosity index suggested	VI > 100	Temperatura di esercizio Working temperature			-15°C +100°C
Grado di filtrazione Oil filtering		> 200 bar: 10 µm < 200 bar: 25 µm			
Pressione di aspirazione Inlet pressure		-0,3 ÷ 2 bar			
Senso di rotazione Pump rotation		Unidirezionale (DX o SX) Unidirectional (Right or Left)			



Jednosměrné litinové čerpadla pro středně těžké použití, objem od 17 do 125 ccm  
 Čtyřdířová příruba se zemědělskou hřídelí ASAE 1-3/8"  
 Boční sání, Boční a zadní tlakový vývod.

Tipo pompa Pump type	Rotazione / Rotation		IN ISO 228	OUT 1 ISO 228	OUT 2 ISO 228	A mm	B mm	Peso Weight Kg
	Destra / Right	Sinistra / Left						
NPH 17 - ASAE 1" 3/8	105-061-00175	105-061-00184	G 1/2	G 1/2	G 1/2	168.5	119.5	11
NPH 22 - ASAE 1" 3/8	105-061-00228	105-061-00237				172	121.5	11.5
NPH 27 - ASAE 1" 3/8	105-061-00273	105-061-00282				174.5	124	12
NPH 34 - ASAE 1" 3/8	105-061-00344	105-061-00353	G 3/4	G 3/4	G 3/4	179.5	125	13
NPH 43 - ASAE 1" 3/8	105-061-00433	105-061-00442				185.5	130	13.5
NPH 51 - ASAE 1" 3/8	105-061-00513	105-061-00522	G 1	G 3/4	G 3/4	190.5	130.5	14
NPH 61 - ASAE 1" 3/8	105-061-00611	105-061-00620				196.5	136.5	14.5
NPH 61 - ASAE 1" 3/8 FORM "A"		105-061-40622				204.5	135.5	15
NPH 73 - ASAE 1" 3/8	105-061-00737	105-061-00746	G 1 1/4	G 1	G 3/4	209.5	140.5	15.5
NPH 82 - ASAE 1" 3/8	105-061-00826	105-061-00833				209.5	140.5	15.5
NPH 82 - ASAE 1" 3/8 FORM "A"		105-061-40833				209.5	140.5	15.5
NPH 100 - ASAE 1" 3/8	105-061-01003	105-061-01012	G 1 1/4	G 1	G 3/4	226.5	154.5	15
NPH 100 - ASAE 1" 3/8 FORM "A"		105-061-41014				226.5	154.5	15
NPH 125 - ASAE 1" 3/8	105-061-01254	105-061-01263				242.5	158.5	17

### CARATTERISTICHE TECNICHE DI FUNZIONAMENTO / TECHNICAL FEATURES

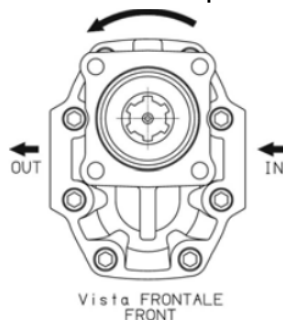
Tipo pompa Pump type	Cilindrata Displacement cm <sup>3</sup> /rev	Pressione/Pressure			Velocità max. continua Max. continuous speed rpm	Velocità max. intermittente Max. intermittent speed rpm	Velocità min. Min. speed rpm
		P1 bar	P2 bar	P3 bar			
NPH-17	17.04	290	315	325	2500	3000	300
NPH-22	22.15						
NPH-27	26.18						
NPH-34	38.88	280	300	310	2200	2800	
NPH-43	43.12	270	290	300	2000	2500	
NPH-51	50.82	240	260	280	2000	2500	
NPH-61	60.06	220	240	250	1800	2000	
NPH-73	72.88	200	220	230	1600	2000	
NPH-82	81.08	190	210	220	1500	1800	
NPH-100	98.18	180	200	200	1500	1800	
NPH-125	122.72	160	180	200	1500	1800	

P1=Pressione max.continua  
P2=Pressione max. intermittente  
P3=Pressione max. di punta

Max. continuous pressure (100%)  
Max. Intermittent pressure (20 sec.max.)  
Max. peak pressure (6 sec.max)

### Identifikace směru otáčení

Levotočivé čerpadlo



Pravotočivé čerpadlo

